

## SWING ARM

CUTTER

Ultimate COMBI

Ultimate CHANGER

TIP DRESSER

- Electric
- Pneumatic
- Manual

Mechanical COMBI

Mechanical CHANGE

WELDING BENCH



## SWING ARM

Tip dresser for fixed guns



ULTIMATE PRODUCTIVITY



# SWING ARM



PRESENTATION	3
ADVANTAGES	4
MODEL NUMBER INDEX	5
FEATURES	6
DIMENSIONS	7
SWING ARM SPARE PARTS	8
INSTRUCTION MANUAL	9
OTHER AMDP PRODUCTS	10
AMDP GLOBAL NETWORK	14



# PRESENTATION

## AMDP IN THE AUTOMOTIVE INDUSTRY

AMDP is committed in offering to the automotive industry the most complete range of products dedicated to tip dressing and changing. AMDP constantly improves the performance and the value of its products to meet the needs of the automotive industry.

With 30 years of experience, AMDP brings now to the market the new swing arm, the reference in productivity for tip dressing.

## OVERVIEW

The dresser mounted on an electric swing arm is a dressing machine with circular motion, composed of:

- A rotary base controlled by an electric motor with a gear box. The tip dressing head can be oriented up to 360° around the swing arm (adjustable from 65° to 180°).
- 1 electric motor which drives the cutter in rotation
- 1 dressing head with an off-set, fixed on an arm of length 600, 800 or 1000mm (other lengths on request)
- 1 electric control unit
- 1 cutter rotation controller
- Adjustements :
  - in the x, y, z directions
  - angular position of the dressing

head

- Three-phase current supply



Swing arm

## ADVANTAGES

- Only one energy to be supplied
- Only one type of swing arm for all uses (horizontal, vertical, inclined)
- Compact swing arm
- Easy to install due to the multiple possibilities of adjustment
- Adaptable and flexible product for different uses
- Quick mounting and dismounting of the cutter on the dresser
- Very compact dressing head, which makes it possible to dress all types of guns
- Recommended pressure of the gun on the cutter: between 80 and 150 daN depending on the type of gun and electrodes





# ADVANTAGES

## PRODUCTIVITY AND CONTROL

Fast dressing of the electrodes: improve the vehicle production / hours.

Control:

- Rotation controller on the dressing head
- Shine control (optional)



## OPTIMIZATION & SECURITY

Compact dimensions of the swing arm in the cell.

Multiple setting simple and efficient for a fast integration.

## PROGRAMMING

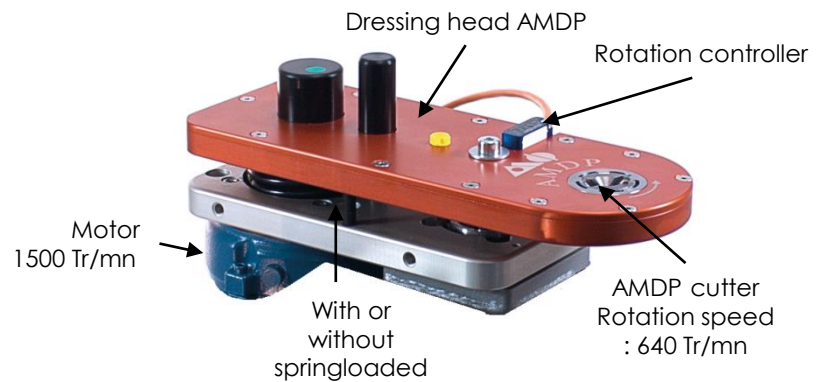
Simple extraction path: similar to welding point (without current flow), 2 positions:

Work and rest.

## DRESSING HEAD PERFORMANCE

With or without compliance.

Rotation speed: 640 tr/min



Cutter AMDP patent



# MODEL NUMBER INDEX



AEM47RxxxG\*<sub>---</sub>

(without rotation detector or controller)

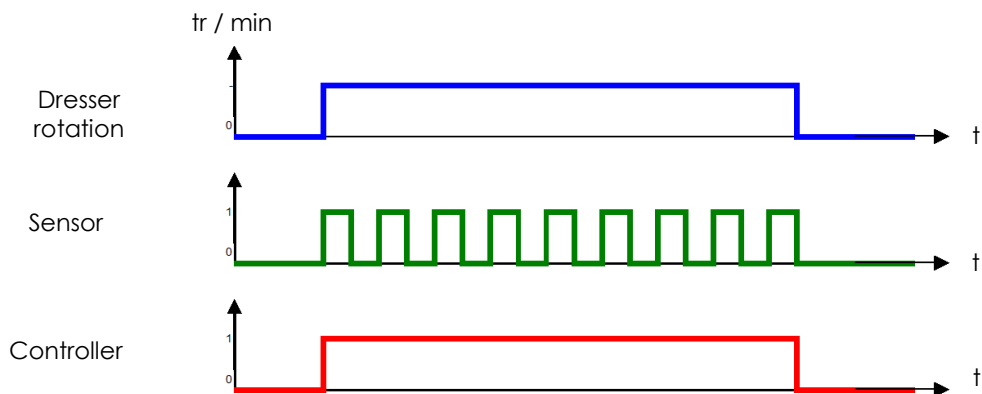
AEM47RxxxG\*<sub>---</sub>

(with rotation detector – green signal)

AEM47RxxxG\*<sub>---</sub>

(with rotation controller – red signal)

\* Model number defined at the order





# FEATURES

## DRESSING PARAMETERS

	Recommendati	Maximum
Froce (daN)	80 to 120	250
Time (ms)	300 to 800	

## POWER CONNECTION & CONTROL ELECTRIC BOX

Might	+ 400V AC
Driving	+24V DC

## ARM LENGHT

	Distance between cutter axis rotation and swing dresser arm axis rotation
0600	600 mm (standard)
0800	800 mm (optional)
1000	1000 mm (optional)

### Arm lenght definition



**Important:** the arm definition will be done by the integrator and communicate to AMDP as soon as possible.

### Cutters definition

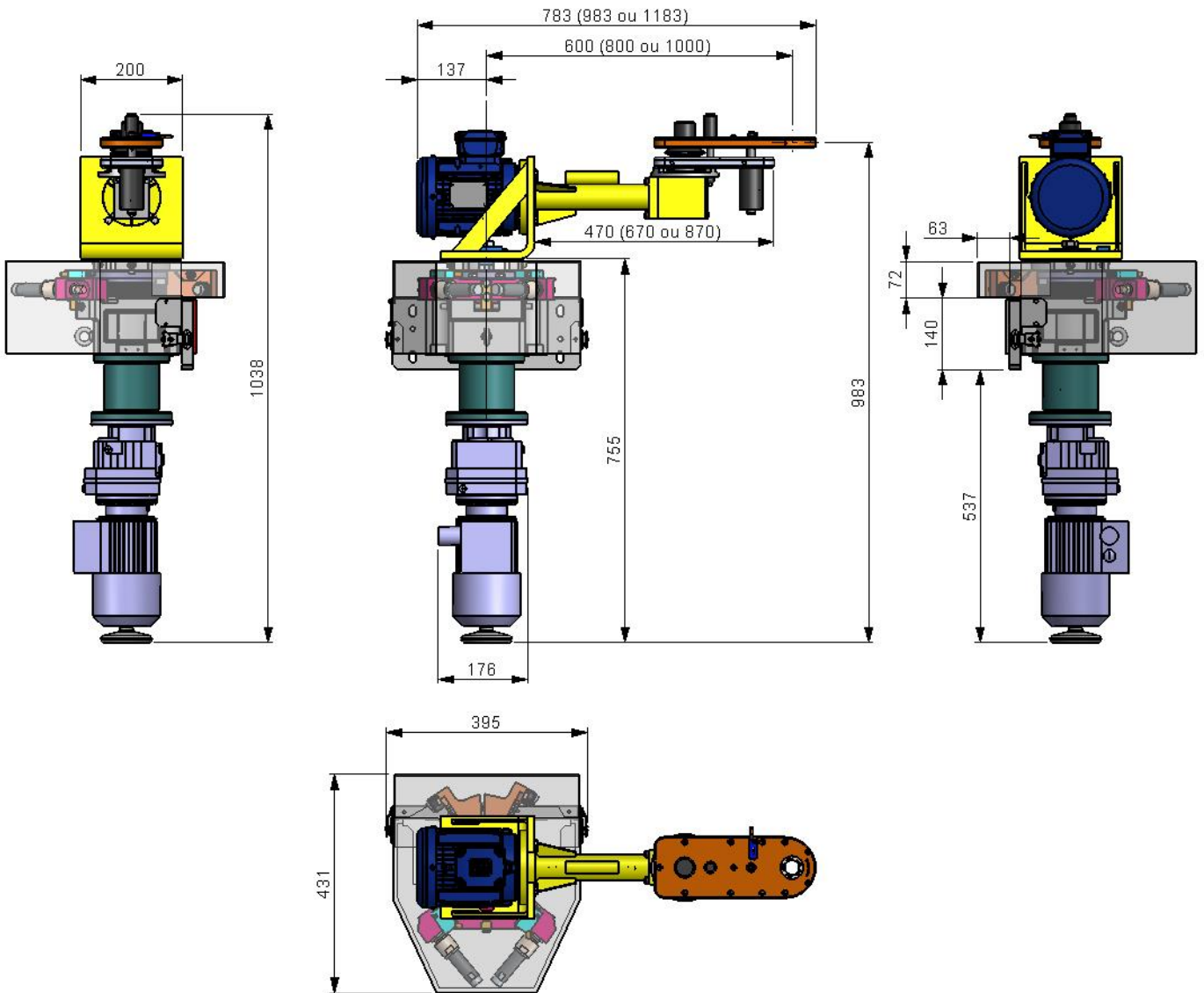


**Important:** to define the cutter to use, it's necessary to provide the thumbnail clip, references and electrodes sheme. AMDP can define and realize a lot of cutter, symmetric or asymmetric according to the electrodes profil.



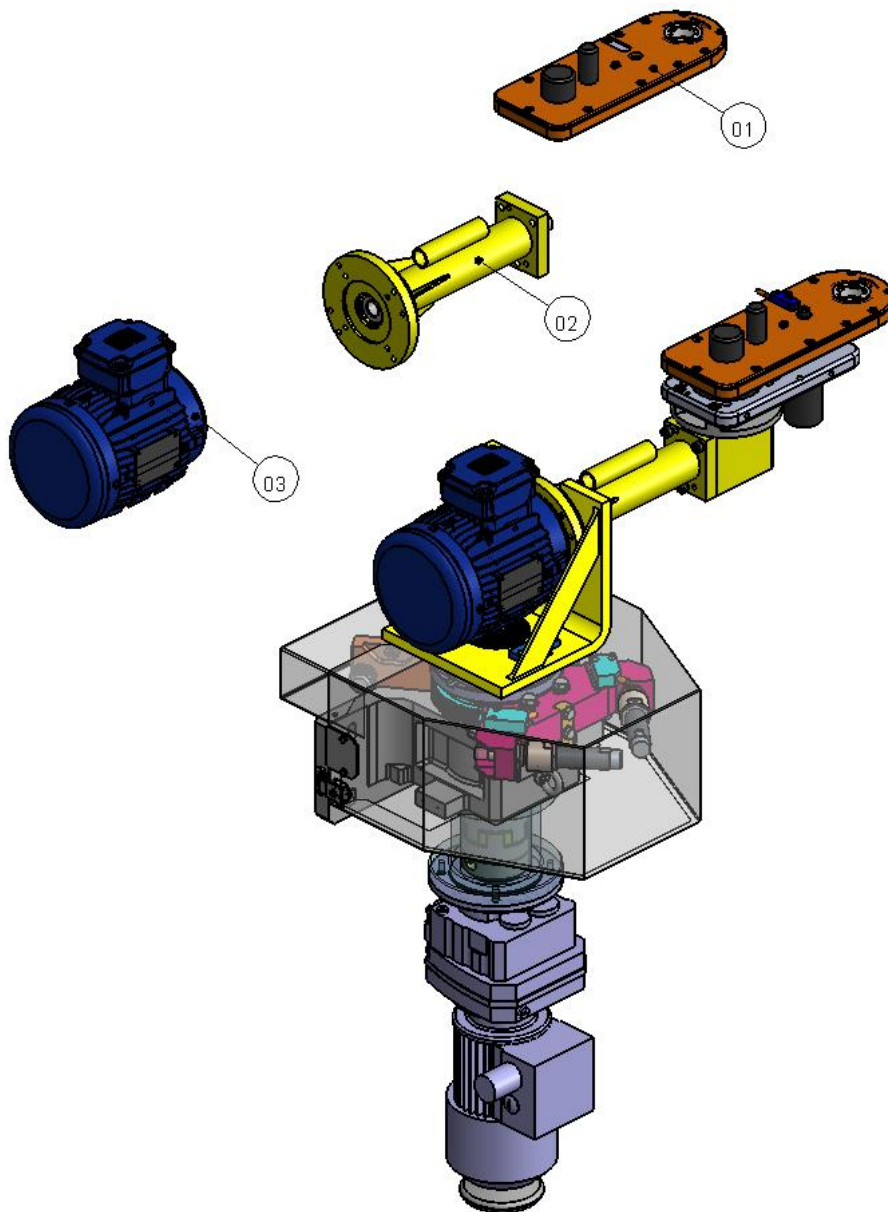
# DIMENSIONS

Lenght	783 mm	Lenght	983 mm	Lenght	1183 mm
Width	431 mm	Width	431 mm	Width	431 mm
Height	1038 mm	Height	1038 mm	Height	1038 mm
Weight	65 Kg	Weight	66 Kg	Weight	67 Kg





# SWING ARM SPARE PARTS



1	TET-2047-A1-N	Dressing head 2047
2	EBAX15-0600	Swing dresser arm (Entre axes 600 mm)
	EBAX15-0800	Swing dresser arm (Entre axes 800 mm)
	EBAX15-1000	Swing dresser arm (Entre axes 1000 mm)
3	AM4-0.752B14.G713	Dresser motor





# INSTRUCTION MANUAL

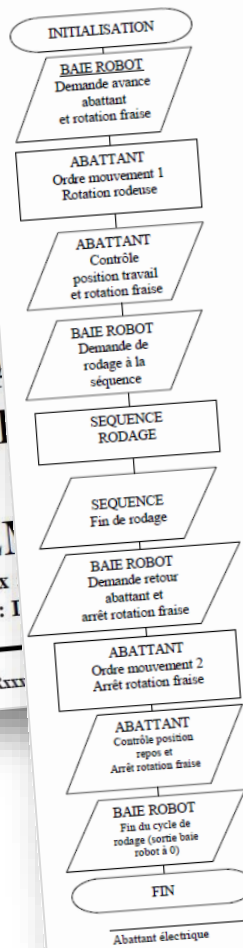
## N° AMDP SWIN ARM

Contact us or our local partner to receive the instruction manual

### NOTICE D'AIDE A LA CONCEPTION, A L'UTILISATION ET A LA MAINTENANCE

A.M.D.P.

#### 1.6) Organigramme de fonctionnement



Moyen : Abattant électrique

Demande de rodage vers l'abattant

Avance du bras vers sa position travail et rotation de la fraise

Bras A.M.D.P.

La b

Fern  
ouve

La fi

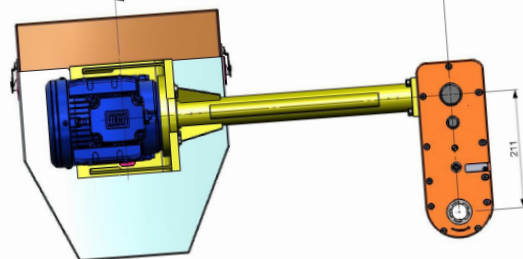
A la  
l'aba  
dem

Reto  
rotat

Cont  
la ro

Fin d

LONGUEUR DE BRAS A DEFINIR  
389 pour bras de 800  
589 pour bras de 900  
789 pour bras de 1000



#### 2.2) Préconisations complémentaires

Voici quelques autres points dont il faut tenir compte lors de l'étude de l'intégration de l'abattant électrique.

- Pour le montage, le réglage et la maintenance, garder une bonne accessibilité sur le devant de la machine et si cela est possible à une hauteur de 1m.
- Prévoir la place pour le désengagement du capot.
- Le coffret électrique doit être fixé à proximité de l'abattant dans l'ilot et à 150mm du sol minimum.
- Les réglages B et C de l'abattant (voir plan d'intégration) ne doivent être utilisés que pour le réglage fin de la position de l'abattant (à l'installation).
- Prévoir un goupillage de la semelle de l'abattant sur son support après réglage par rapport à la pince.

#### 3) Instructions d'installation

##### 3.1) Consignes de sécurité

Toute personne intervenant dans le coffret devra être habilitée et devra s'assurer que l'alimentation 400V sera consignée.  
Avant toute intervention sur l'abattant électrique, il est impératif de consigner le coffret électrique à l'aide du sectionneur général QSG.

Abattant électrique

10/33



# OTHER PRODUCTS AMDP



## CUTTER

The best in class cutters: no jamming, no blowing needed even if MASTIC.  
The best cut in dimensions with no center pin. Any profile available for any tip dresser on the market.  
Dressing optimization for an optimal electrode lifetime.  
Can be with HSS or CARBURE.

## FIXED TIP DRESSER (for robot guns)

Easy integration, High speed rotation (640rpm), integrated compliance, no air needed due to our cutters. Dressing time well under a second.  
Maintenance free.  
Built on a very robust stand.  
Contact us to define your E-box.



## COMBI ULTIMATE

Compact set and easy to integrate. It takes the same benefits and characteristics of the ultimate combi AMDP changer.  
Fast electrode change cycle.  
Simple path as well for the extraction and electrodes change.

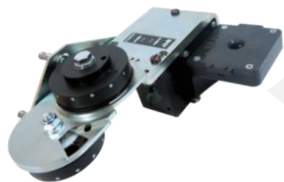
## ULTIMATE CHANGER

With or without its robust stand, Compact and easy to build in your lines. Can be post-assembled on your AMDP tip-dresser. Increase your productivity with a complete change cycle down to 15 seconds. Easy installation and monitoring.  
Contact us for your E-box. Upgrade your BIW cells!



Without stand

With stand



## ULTIMATE MOBIL CHANGER

Simple to integrate in the middle of your gripper, with its air motorization weight is under 10Kg. Same patented technology as the Ultimate Combi changer. Boost the productivity of your fix-gun BIW cells with a complete change cycle down to 15 seconds. Easy installation and monitoring, no E-box. Upgrade your BIW cells!

## CHARGING UNIT

Have extra Charging Units to prepare them off line to ensure even more productivity.



## MECHANICAL COMBI

Built on an AMDP tip-dresser, proven technology with more than 10.000 units installed world-wide. Easy to integrate, the complete change cycle is operated by the robot itself through its path with a change cycle time of 30 seconds. Upgrade your AMDP Tip dresser!

## MECHANICAL MOBIL CHANGER

To be integrated in your gripper, no energy to be provided, 3 sensors to monitor. Robust and proven technology as for the Combi with a change cycle time of 30 seconds. Upgrade your BIW cells!





# OTHER PRODUCTS AMDP



## DRESSING BENCH

Dress off-line up to 8,000 electrodes a day. Different cycles, manual or automatic. A must have beside your hand held welding guns.

## WATER PULL-UP CYLINDER

Destress your water cooling circuit before changing electrodes. Improve cell security and reduce risks and corrosion issues. Ask for our air cylinder or our patented energy free solution.

Compact and easy set to integrate.



## AIR POWER HANDHELD DEVICE (dressing gun closed)

The most powerful device on the market, dressing both electrodes while closing the gun on the cutter. Compact, robust with its full aluminium body, it uses the same cutters as all the rest of the range. Check the ability of your handheld welding gun to close without starting a welding sequence.

## AIR POWER HANDHELD DEVICE (dressing gun open)

Designed to dress electrodes one after another, low weight and delivered with a unique AMDP guiding unit to ensure parallel welding lenses on both electrodes.



## W-GUN ALIGNMENT KIT

Control the good alignment of the gun before/after electrode changing or dressing. Boost your BIW cell controls with simple solutions.

## BLOWING KIT

In some extreme cases cutter blowing is desired. Though remember AMDP cutters, thanks to its conception, does not require any blowing (chips are automatically ejected by the rotation during dressing).



For more information, please contact us or our local partner



7 allée de Giverny 78290  
Croissy-Sur-Seine • France  
Tel: +33 (0)1 30 09 25 25





# AMDP GLOBAL NETWORK

## AMDP IN THE AUTOMOTIVE INDUSTRY

AMDP is committed in offering to the automotive industry the most complete range of products dedicated to tip dressing and changing. With 30 years of experience, AMDP brings now to the market the ULTIMATE Combi, which is the reference in productivity for tip dressing and tip changing.



## OUR VALUES

### RELIABILITY

Best in class product  
Durability  
Performance

### PRODUCTIVITY

Increase productivity  
cost reduction  
Online availability

### SERVICE

Customized solutions  
Global service network  
Training center

//Authorized  
Distributor



### AMDP NEW LOCATION

8 Bvd G.Marie Guynemer  
78210 Saint-Cyr-l'Ecole. FRANCE  
Tel : +33 (0)1 30 09 25 25